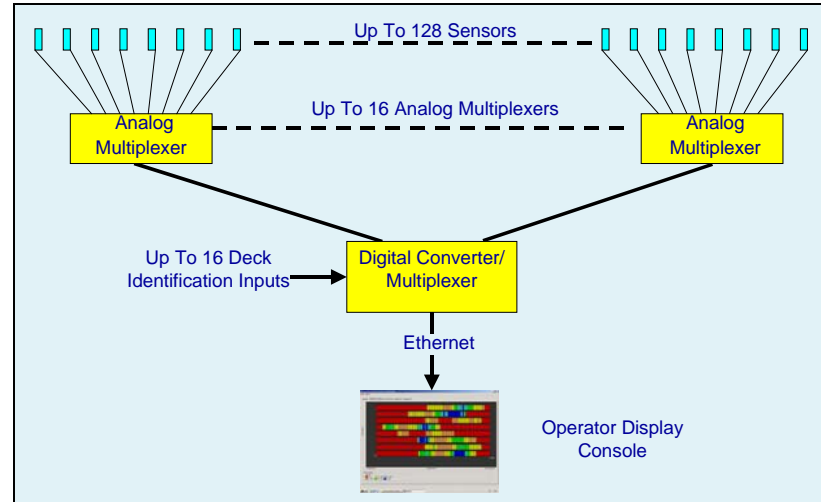
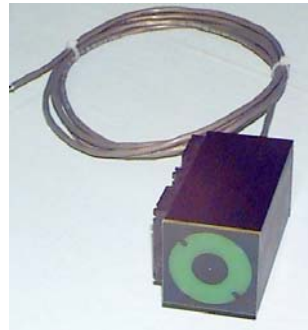


## Sensortech Systems, Inc. introduces the latest addition to their moisture product line, the IMPS-4000, Instant Moisture Profiling System



### IMPS-4000 MAJOR FEATURES:

- Radio frequency dielectric measurement penetrates product to provide true total moisture
- With multiple discrete non-contact moisture sensors arrayed across production line, the IMPS-4000 displays real-time moisture profiles in both machine and cross direction
- Totally solid state system
- Moisture sensors interface to PC via Ethernet link
- User-friendly software provides multiple display formats
- Data-logging provides simple min, max, average of every board
- Moisture trend time plot for kiln control



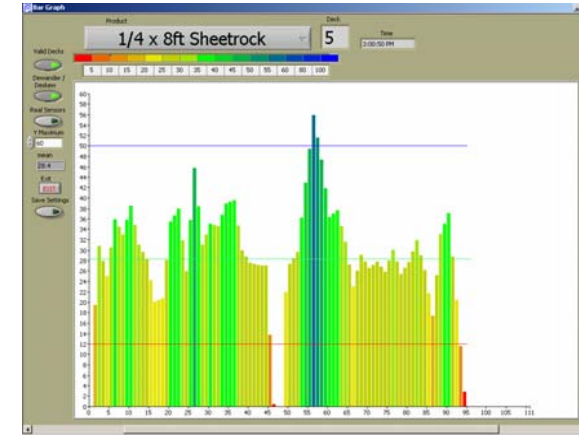
Individual sensor measures  
2inch square x 4.5 inch long



Data Concentrator adjacent  
to sensor array collects data  
and transmits to PC

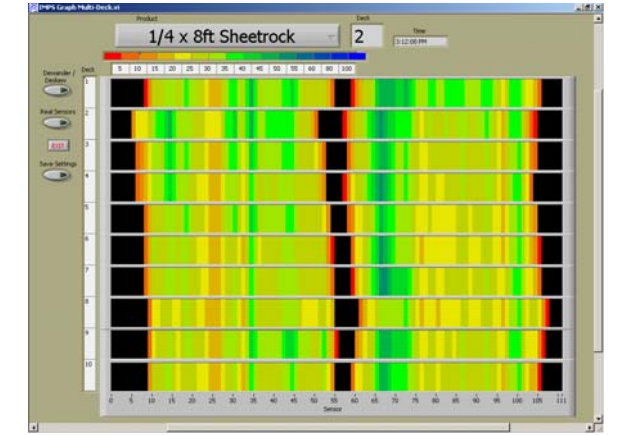
### Why Measure Heat When You Should Measure Moisture?

While surface temperature relates to moisture content, the relationship will vary with rate of drying and particularly with final zone temperature, resulting in the need for continual re-adjustment. Sensortech Systems patented dielectric measurement relates directly to moisture content and is not affected by process temperature, ambient temperature or rate of drying.



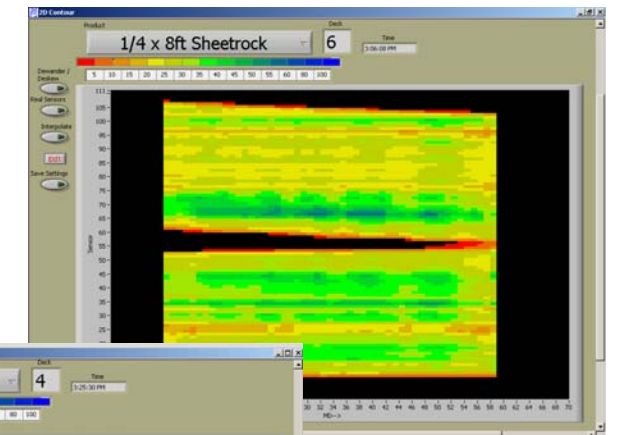
**C-D PROFILE DISPLAY**  
Cross-direction moisture profile  
Provides clear indication of board edge conditions

**MULTI-DECK DISPLAY**  
C-D profile (board average) of each deck stacked to simulate cross section of dryer out-feed  
Provides clear indication of final zone kiln balance

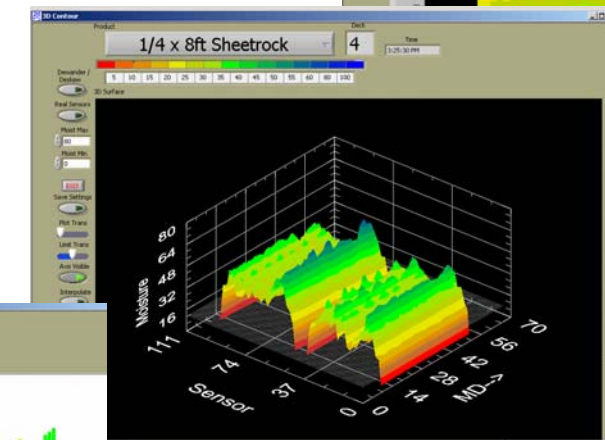


### 2 & 3-DIMENSIONAL MOISTURE CONTOUR

A bird's-eye view of board(s) exiting dryer  
Moisture distribution can be clearly seen with blue streaks indicating wetter areas  
3-D Provides additional perspective



**Multiple Screens**  
Bar Graph and Trend Plot displayed simultaneously. Any number of screens may be displayed at the same time.



# OUTSTANDING PERFORMANCE and RELIABILITY

## Specifications

**Accuracy:** ±1.0% of Full Scale  
Subject to application

**Sampling Rate:** 30 millisecond

### Sensor

**Output:** 0 – 10 volt

**Temperature Controlled:** 60°C

**Operating Temperature:** 0 - 60°C

**Maximum Temperature:** 85°C

**Size:** 2" (50mm)Sq.

4.5" (115mm) L

**Mounting:** Din-rail

**Power:** ±12vdc

### Data Concentrator

#### Analog Multiplexer

**Input:** 0 - 10vdc

**Number of Inputs:** 8

**Output:** 0 - 5vdc

#### Embedded Processor

**Number of Analog Inputs:** 16

**Output:** Ethernet (UDP)

**Power:** 115/240vac 50/60Hz

Represented by:

## Options

PC with following features:  
2Ghz minimum processor speed  
512 MB RAM  
40GB Hard Disk  
Windows XP® Operating System  
Writeable CD  
(2) 10/100 Ethernet Ports

Digital I/O Board – provides alarm outputs and analog output.

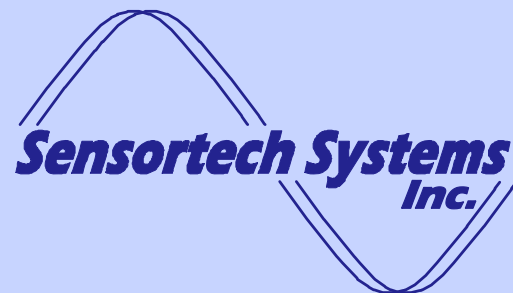
It is recommended the above system be supplied by Sensortech and will normally be included in quote unless otherwise requested.

Nema 4 (IP66) Vertical 19" rack enclosure for PC

UPS supply

### Warranty

*All products manufactured by Sensortech Systems, Inc. are warranted against defects in material and workmanship for a period of one year from date of shipment. In the event any product manufactured by Sensortech proves to be defective within the warranty period, it will be repaired or replaced free of*



*The Measurement and Control Company*

5140 Commerce Avenue, Suite #C/D  
Moorpark, CA 93021  
Ph. +1 805 378 1160 Fax. +1 805 378 1163  
[sales@sensortech.com](mailto:sales@sensortech.com)  
[www.sensortech.com](http://www.sensortech.com)

# IMPS-4400

## Instant Moisture Profiling System



- ACCURATE DRYER BALANCING
- IMPROVED QUALITY CONTROL
- REDUCED ENERGY & REJECT PRODUCT
- INCREASED PRODUCTIVITY

**Sensortech Systems  
Inc.**

*The Measurement and Control Company*